

# 2023 PIT UNiverse

## Newsletter Editorial Guidelines

The bi-monthly PIT UNiverse newsletter is released according to the schedule listed below. You are invited to share your expertise and take on the state of PIT through the following departments and editorial features.

Contact [editorial@pitcases.org](mailto:editorial@pitcases.org) for more information.

**January/February** | MATERIALS DUE: 12/16

PUBLIC AND CRITICAL INFRASTRUCTURE

**March/April** | MATERIALS DUE: 2/22

INSTITUTIONALIZING PIT

**May/June** | MATERIALS DUE: 4/18

CYBERSECURITY

**July/August** | MATERIALS DUE: 6/20

DATA SCIENCE/AI

**September/October** | MATERIALS DUE: 8/15

CLIMATE CHANGE

**November/December** | MATERIALS DUE: 10/17

DEFENDING DEMOCRACY



## IN EVERY ISSUE

### RESOURCES

A round up of toolkits, guides, videos, reports, curricula, courses, case studies, and other PIT-UN member materials.

### BULLETIN

Need-to-know updates and happenings for PIT-UN members, and grantees from the desk of Brenda Perea, program manager.

### PULSE

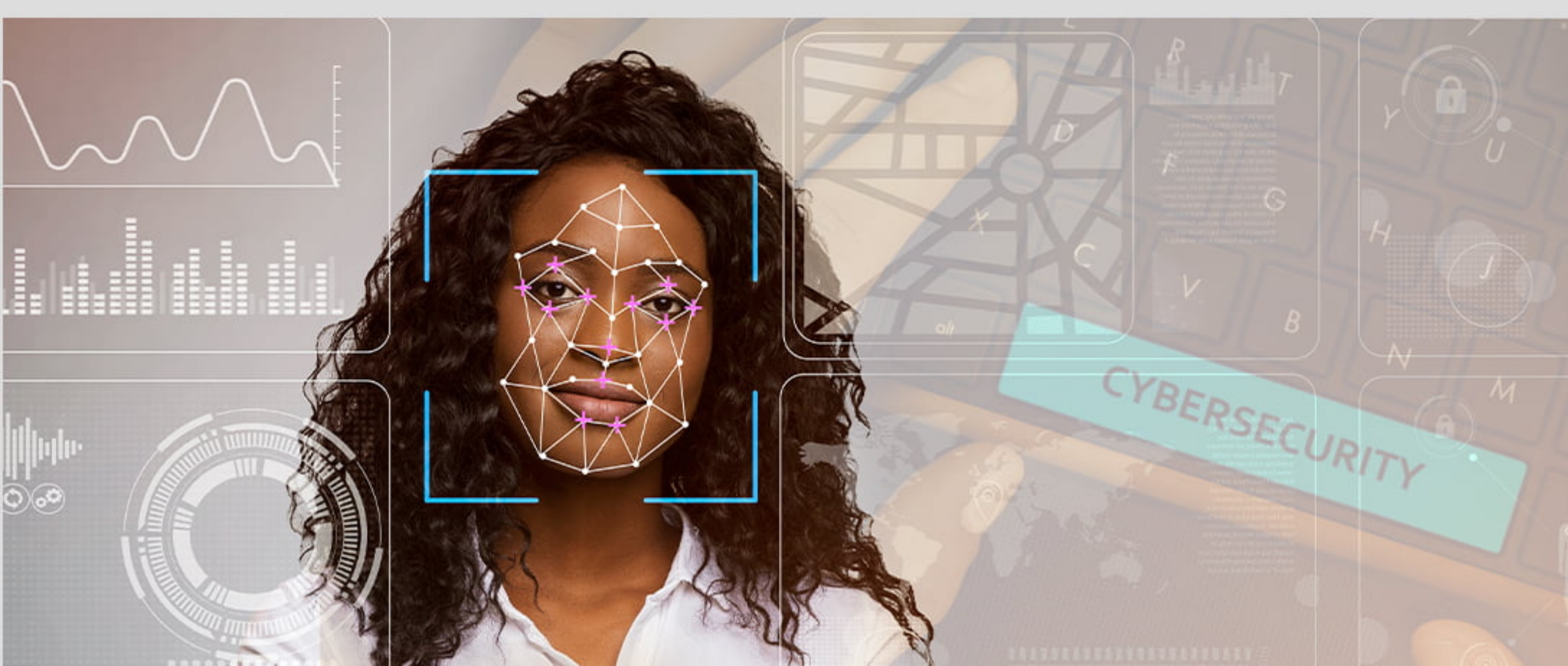
Expert-authored features, such as op-eds and best practice guides, from PIT-UN members and profiles of existing members and projects.

### PIPELINE

Information sourced for and/or authored by students designed to inform students about the evolving PIT education and career pipeline.

### THE PIT LIST

Timely events, opportunities, and happenings from across the PIT universe.



# EDITORIAL FEATURES

## OPINION

First-person opinion or reaction article ranging between 400-1,000 words related to your expertise and areas of speciality.

## EXPERT AND PRACTITIONER

Brief explainer video or article (750 words or less) that focus on specific areas of your expertise, project or academic principles.

(Samples: [Georgia Southern University](#) and [5 Questions with Fran Berman](#))

## PUBLIC POLICY

Article (750 words or less) providing an update and/or analysis of issues related to a specific aspect of PIT policy.

## HUMAN-CENTERED DESIGN

Community partners spotlights

## BEST PRACTICE GUIDES

Member-generated guides on courses, projects, and Network protocols.

(Sample: [Best Practices for Adopting the Computational Ethics for Natural Language Processing Course](#))

## BY THE NUMBERS

Designed features that encapsulate project deliverables, outcomes and progress and stakeholders.

(Samples: [GISEC](#), [How to PIT](#) and [NYU PIT Alliance](#))

## PIT IN PRACTICE PROFILES

Q&A with an active PIT practitioner.

(Samples: [Digital Corps](#) and [Maria Yuan](#))

